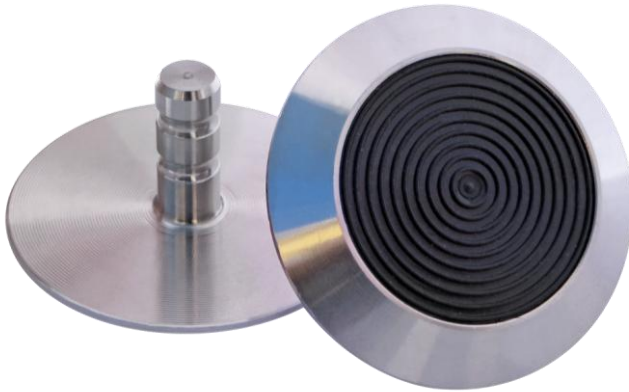


Tactile Ground Surface Indicators



Discrete Warning Tactile

Tactile Dimensions

Square Metre Ratio	400 studs per 1m ²
--------------------	-------------------------------

Dome Dimensions

Top of Dome	25mm
Bottom of Dome	35mm
Thickness of Dome	5mm

Range	Guardian Discrete Tactile Ground Surface Indicator
Material	High Quality - 316 Marine Grade Stainless Steel with Black TPU Insert
Substrates	Concrete, Granite, Tiles, Vinyl, Timber, Pavers
Installation	Epoxy Adhesive-Fixed Design
Standards	Complies with the National Construction Code D3.8 - Building Code of Australia Complies with and Manufactured to Australian Standards AS/NZS 1428.4.1-2009 Complies to Australian Standards AS/NZS 1428.1-2009 Complies to Australian Standards AS/NZS 4586-2013
Warranty	Guaranteed for 2 Years

Slip Resistant Testing

AS/NZS 4586-2013	OIL - WET Ramp Analysis	Class R12
AS/NZS 4586-2013	WET Pendulum Analysis	Class P5

Guardian Colour and Stock Codes

Colours	Application	Stem Width	Stem Length	Stock Codes
Black	Internal and External	6mm	15mm	GTS615-316TPUBK

Luminance Contrast Requirements

The National Construction Code of Australia and the AS/NZS 1428.4.1 require a minimum luminance contrast.

The luminance guidelines for TGSIs to contrast against the base surface is as follows:

- the raised section shall have a minimum contrast of 45% when constructed of one material/colour
- the raised section shall have a minimum contrast of 60% when constructed of two materials/colours